

Stoke Road  
Cheltenham GL52 7YA



## Stoke Road, Bishops Cleeve, CheltenhamGL52 7YA

This first floor one bedroom apartment located in Bishops Cleeve would be perfect for a first time buyer or investor. This property comprises of living room, kitchen, bathroom and double bedroom with built in wardrobes. Further benefits include allocated parking and great transport links to Cheltenham, Evesham and Stoke Orchard.

Perfect for first time buyers or investors • First floor apartment • One bedroom with built in wardrobes • Seperate kitchen • Communal gardens • Great transport links • Allocated parking • Electric heating • EPC rating D • Bishops Cleeve location





### **LIVING ROOM**

16' 1" x 13' 3" (4.9m x 4.04m) Door into living room. Window to rear. Electric heater. Door into kitchen, bathroom and bedroom.

### **KITCHEN**

7' 10" x 5' 11" (2.39m x 1.8m) Range of wall and base units. Splash back tiles. Oven and hob. One bowl sink with drainage space.



### **BEDROOM**

11' 10" x 11' 3" (3.61m x 3.43m) Two windows to front. Built in wardrobes. Electric heater.

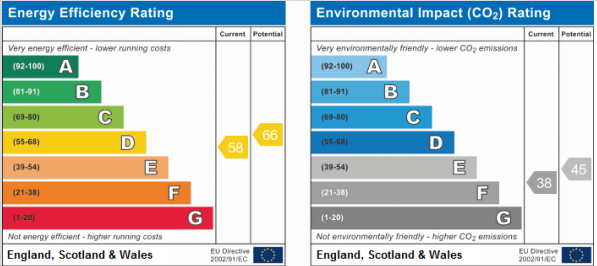
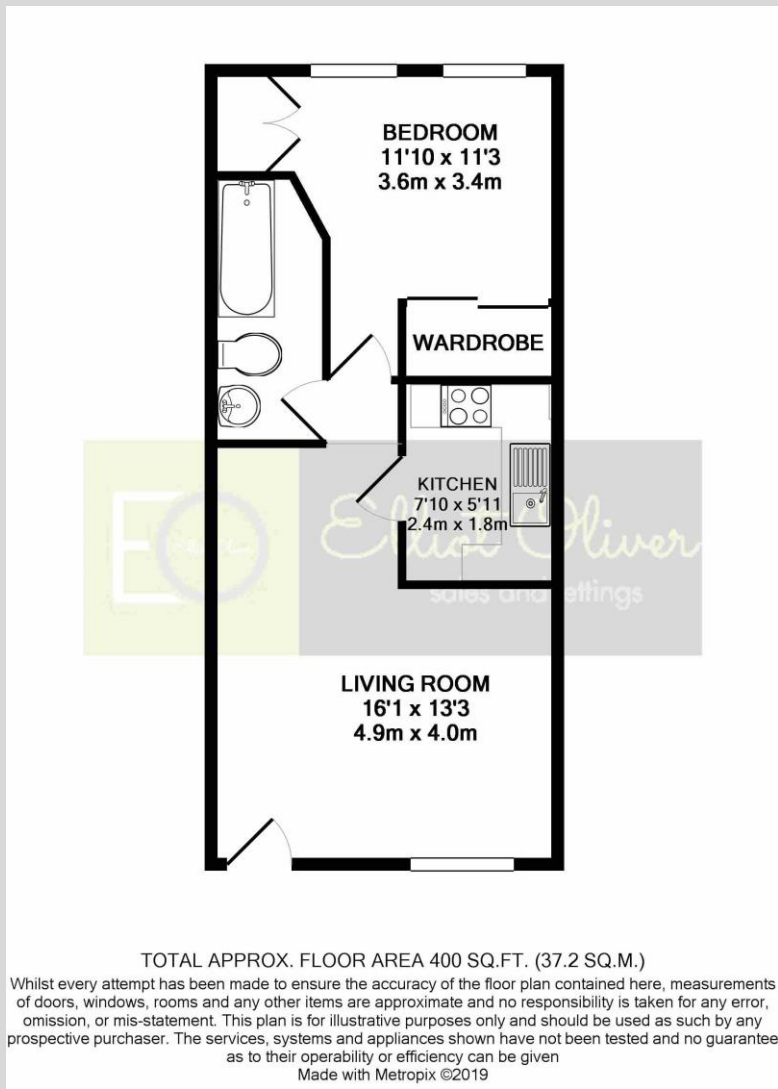
### **BATHROOM**

4' 5" x 9' 11" (1.35m x 3.02m) Bath with shower over. Hand wash basin. WC.

### **OUTSIDE**

One allocated parking space. Communal gardens.





**OFFICE**  
101 Promenade,  
Cheltenham,  
Gloucestershire, GL50  
1NW  
info@elliottoliver.co.uk

**Agents Note:** Whilst every care has been taken to prepare these sales particulars, they are for guidance purposes only. All measurements are approximate are for general guidance purposes only and whilst every care has been taken to ensure their accuracy, they should not be relied upon and potential buyers are advised to recheck the measurements