

Eldorado Road

Cheltenham GL50 2PT

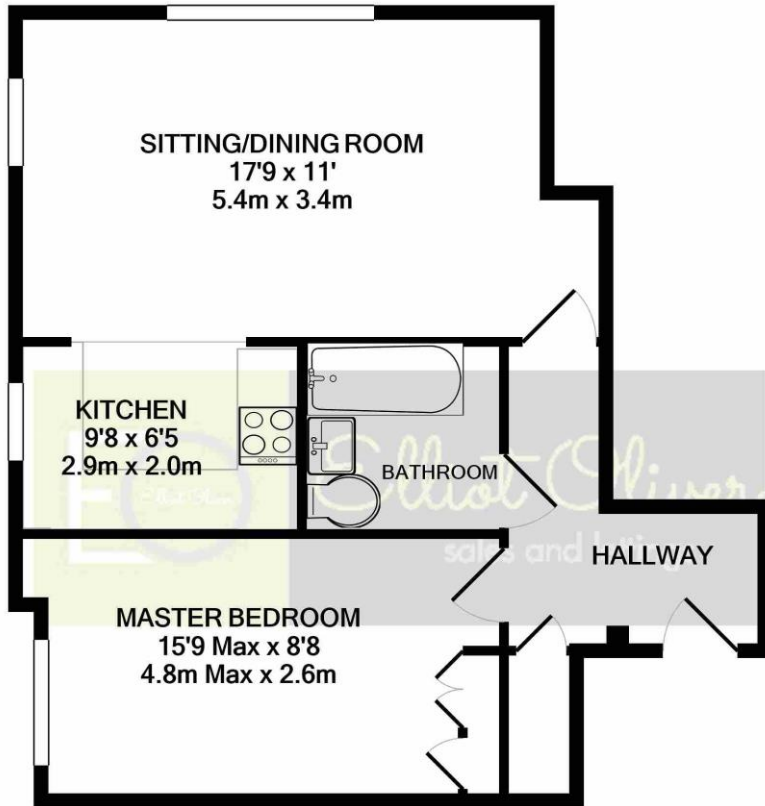


Eldorado Road, Cheltenham GL50 2PT

Set in a picturesque location of Christchurch is this sizable one bedroom ground floor apartment with its own entrance. There are many amenities nearby which include the train station, supermarket and only a short walk to the Town Centre / Montpellier. The accommodation is very well presented throughout. You walk in into the entrance hall which leads you into all parts of the apartment. There is an open plan living/ kitchen / diner, in the kitchen you will find integrated appliances and smart kitchen fittings. The bathroom is a natural suite and offers a shower over bath. The double bedroom with built in wardrobes is positioned at the front of the apartment. Further benefits include allocated parking, wonderful communal gardens and gas fired central heating.







TOTAL APPROX. FLOOR AREA 542 SQ.FT. (50.4 SQ.M.)

Whilst every attempt has been made to ensure the accuracy of the floor plan contained here, measurements of doors, windows, rooms and any other items are approximate and no responsibility is taken for any error, omission, or mis-statement. This plan is for illustrative purposes only and should be used as such by any prospective purchaser. The services, systems and appliances shown have not been tested and no guarantee as to their operability or efficiency can be given

Made with Metropix ©2020



OFFICE

101 Promenade,
 Cheltenham,
 Gloucestershire, GL50
 1NW
 info@elliotoliver.co.uk